



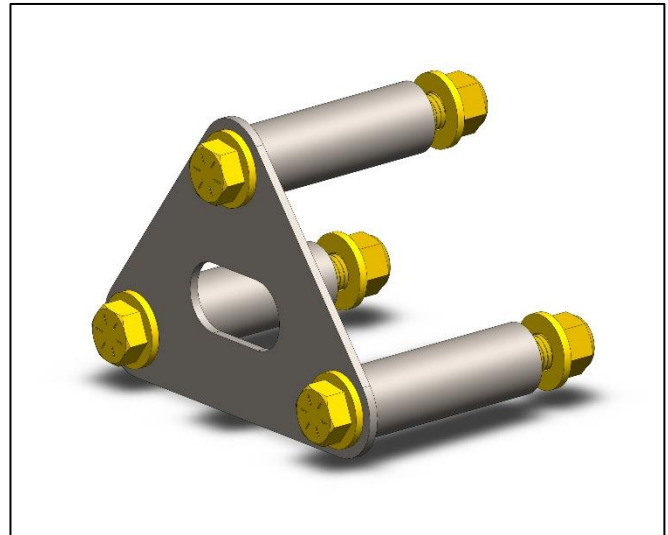
INSTALLATION INSTRUCTIONS

Part #	Description
WFO 8401	2019+ Jeep JT Gladiator - Additional Passenger side Crossmember Pieces

10076 Streeter Road Suite #7, Auburn, CA 95602
 Phone: 530.268.9494 www.wfoconcepts.com

WFO 8401

BILL OF MATERIALS	
Qty. 1 - C-31001-13	3 Hole Outer Bolt Plate
Qty. 3 – TS-10018-100	Tube Sleeves
Qty. 3 – ½”-13x4.5” G8 Bolt Kits	Hardware
TOOLS NEEDED	
Ratchet or Air Impact	
¾” Socket	
¾” Wrench	
Round File or Die Grinder	
4-1/2” Angle grinder	
Cut off wheel and a grinding wheel	
Black Spray Paint	



WARNING!
<p>*** Read all instructions thoroughly from start to finish before beginning the job! If these instructions are not properly followed, severe frame, suspension, tire, or body damage may result to the vehicle!</p> <p>*** WFO Concepts recommends that you exercise extreme caution when working under vehicles supported by jack stands.</p> <p>*** WFO Concepts recommends all installation to be performed by a professional shop/service technician. Product failure due to improper installation will not be covered under WFO's warranty policy.</p>

TECH NOTES:
<p>- WFO 8401 is intended to be used with WFO 8203 on only 2019+ Jeep JT Gladiator's.</p>

REMOVAL:

1. Before installing WFO 8200 Crossmember into your Jeep JT Gladiator, you must cut off the factory 2-bolt bracket on the inside of the passenger frame. **Fig. A**. Using a cut off wheel or plasma, remove bracket, grind smooth, and touch up with black spray paint. **Fig. B**

Fig. A



Fig. B



INSTALL:

2. After removal and prep of frame, refer to the Instructions in WFO 8203 on installing the crossmember up to this point.
3. On the outside of the frame rail, there will be 3 large holes **Fig. C**. It is easiest to first slip the bolts with washers through the triangle plate, then the 3 spacers, and insert them into the corresponding holes **Fig. D**. Be careful to not let the spacers fall into the frame. You might need to open the holes up to fit the spacers. Use a round file or a die grinder, then touch up with paint.

Fig. C

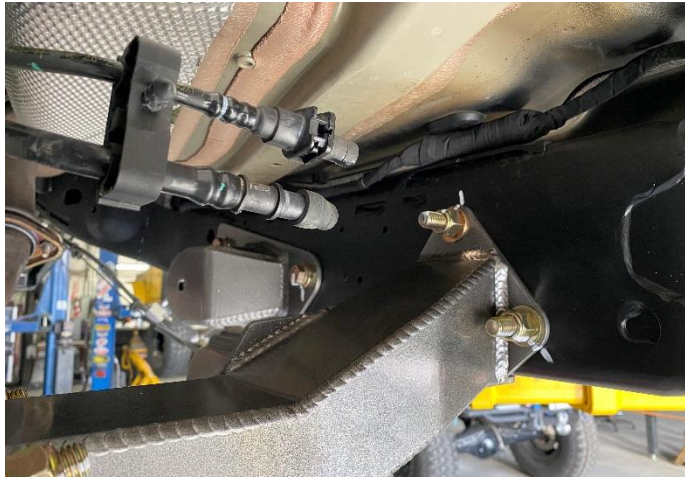


Fig. D



4. Install the remaining 3 washers and nylocks onto the bolts on the inside of the frame, make sure the bolts are through the crossmember. Torque to 55 Ft. Lb. **Fig. E**

Fig. E



5. Continue on with following Instructions WFO 8203 and finalize your new suspension.

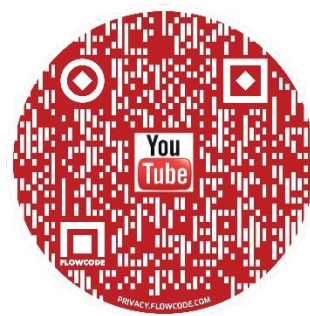
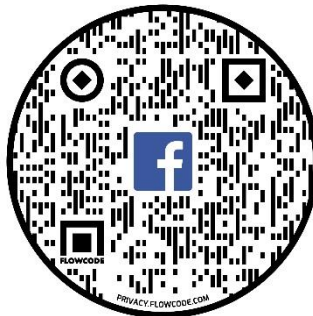


10076 Streeter Road Suite #7, Auburn, CA 95602

Phone: 530.268.9494 www.wfoconcepts.com

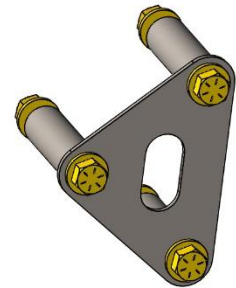
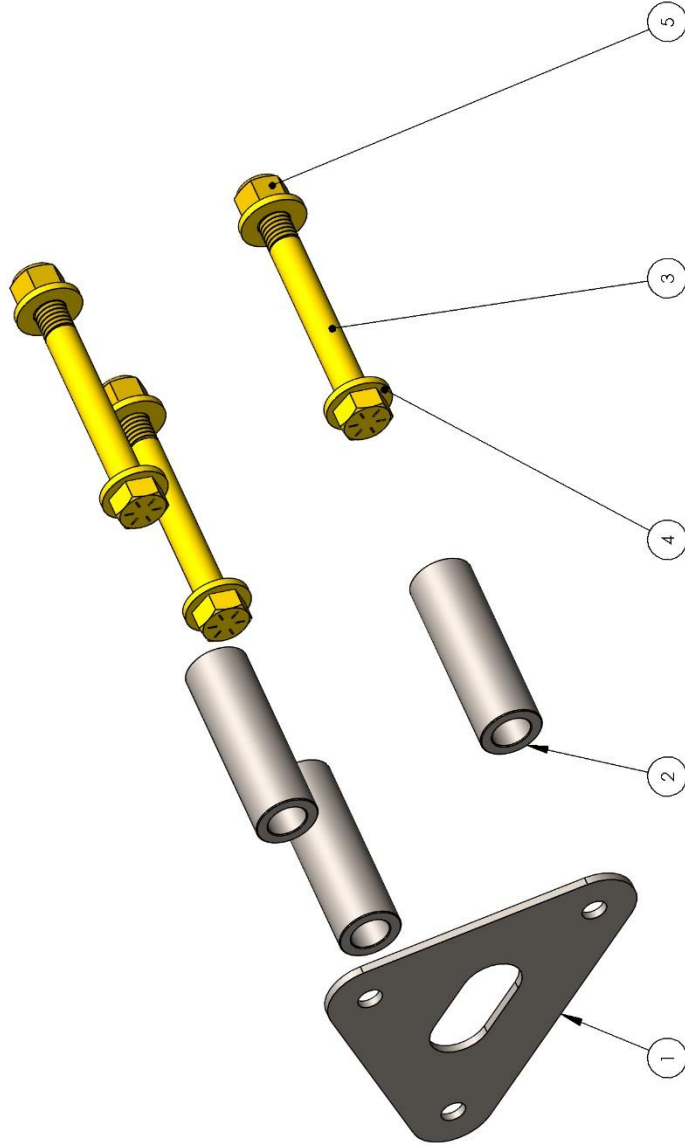
Follow us on all Social Media Platforms!

Remember to share your photos and tag #WFOCONCEPTS to be featured on our page!



ITEM NO.	PART NUMBER	DESCRIPTION	QTY.
1	C-31001-13	Passengerside - Frame 3 Bolt Plate for Jeep JT	1
2	TS-10018-100	3.125" Frame Spacer	3
3	0115219	1/2"-13 Grade 8, 4.5" Long Bolt	3
4	1133817	1/2" Grade 8 Washer	6
5	1137187	1/2"-13 Grade 8, Nylock Nut	3

REVISIONS			
REV.	DESCRIPTION	DATE	APPROVED
A	Part Released	12/8/21	Keven K



UNLESS OTHERWISE SPECIFIED: DIMENSIONS ARE IN INCHES TOLERANCES: ANGULAR $\pm 0.1^{\circ}$ BEND $\pm 0.5^{\circ}$ ONE PLACE DECIMAL ± 0.05 TWO PLACE DECIMAL ± 0.01 THREE PLACE DECIMAL ± 0.005		DRAWN BY: KEVEN	NAME KEVEN	DATE 12/8/21
PROPRIETARY AND CONFIDENTIAL THE INFORMATION CONTAINED IN THIS DRAWING IS THE SOLE PROPERTY OF WFO CONCEPTS. ANY REPRODUCTION IN PART OR AS A WHOLE WITHOUT THE WRITTEN PERMISSION OF WFO CONCEPTS IS PROHIBITED.		DRAWING UPDATED:	WFO CONCEPTS 10076 Steepler Rd., Suite 7 Auburn, CA 95602 Phone: 530.268.9494 Fax: 530.268.9498 Website: www.wfoconcepts.com	
TITLE: 2019+ Jeep JT Gladiator Additional Passenger side Crossmember Pieces				
PART NO: WFO 8401			REV A	SHEET 1 OF 1
DO NOT SCALE DRAWING				