



10076 Streater Road Suite #7, Auburn, CA 95602  
Phone: 530.268.9494 [www.wfoconcepts.com](http://www.wfoconcepts.com)

Part #	Description
WFO RB-JT	Jeep JT Gladiator Rear Bumper

Bill of Materials	
(1) WFO RB-JT	Complete Rear Bumper
(1) WFO HW-RB-JT-KIT	Hardware kit for bumper
Tools Needed	
<ul style="list-style-type: none"> <li>- 3/8" Ratchets and/or 3/8" impact gun</li> <li>- Sockets – 15mm, 16mm, 18mm, 21mm, T50, 3/8", 3/4"</li> <li>- Wrenches – 3/4"</li> <li>- Small flathead screwdriver and/or pick tool</li> <li>- Body panel removal tool or small pry bar</li> <li>- Pliers</li> </ul>	



**WARNING!**

\*\*\* Read all instructions thoroughly from start to finish before beginning the job! If these instructions are not properly followed, severe frame, suspension, tire, or body damage may result to the vehicle!

\*\*\* WFO Concepts recommends that you exercise extreme caution when working under vehicles supported by jack stands.

\*\*\* WFO Concepts recommends all installation to be performed by a professional shop/service technician. Product failure due to improper installation will not be covered under WFO's warranty policy.

**Note:** This install will re-use some of the factory hardware and sensor bezels if equipped, keep all parts till the end. Your new bumper also utilizes frame supported rocker guards found on the Rubicon models. If you do not own a Rubicon Model, you can purchase the brackets from your local Jeep Dealership. Driverside Part # 68356518AA. Passengerside Part # 68356519AA.

**REMOVAL**

1. Remove Spare Tire. Tire removal tool is located under Driverside rear seat.
2. With a body removal tool or pliers follow the wires on the back side of the bumper to the frame and gently pry the plastic harness mounts away from the frame. Disconnect each sensor plug connector on the driver and passenger side frame rails. (Fig. A) Also disconnect the 7-pin trailer brake plug from the back of the bumper. (Fig. B)

Fig. A



Fig. B



3. Remove license plate with a flathead screwdriver. With a 16mm socket remove the 2 center bolts that were behind the license plate. (Fig. C) **Save Hardware.**

Fig. C



4. Rubicon models equipped with side rock guards: Use a 15mm socket and unbolt the 3 bolts on the bottom side of the rock guards. (Fig. D) **Save these 6 bolts.** As well, remove the 2 T50 Torx bolts on each side of the hitch receiver. (Fig. E)

Fig. D



Fig. E

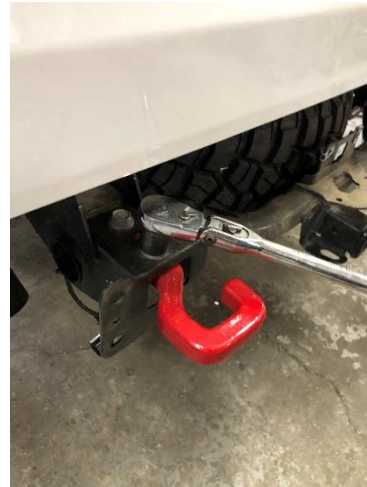


5. Using a 16MM deep socket, remove the remaining 4 nuts holding the bumper to the frame rails. (Fig. F) The bumper is now free and ready to be removed. You will now have access to the 2 tow hooks. Remove these with a 21MM socket. (Fig. G)

Fig. F



Fig. G



6. The next steps are for the JT Rubicon models that are equipped with rocker guards and proximity sensors in the bumper. **Skip to step 11** if you don't have side rock guards or proximity sensors in your bumper.
7. With the bumper off, lay it flat on the ground with the inside of the bumper and the wire harness facing up. If equipped, completely remove the side rocker guards with 2 more 15mm bolts. Now the wire harness and all 4 sensors, if equipped, will be exposed.
8. **Important!** Label all positions of the sensors and light connectors. Take photos if needed when removing the harness. The sensor locations cannot be mixed up.
9. To remove the sensors from the bezels, you will need a skinny screwdriver and or pick tool. (Fig. H) The sensor brackets are a 2-piece design. There is an outer bezel that clips into the inner bezel. Note again how these go together, label which one is outer driver and outer passenger, they are orientated and can only be assembled in one direction. On each side of the sensor, pry out gently on the release tab to free up the tang on the side of the sensor. (Fig. I) Remove all 4 sensors the same way.

Fig. H



Fig. I



10. You will only be keeping the outer 2 sensor bezel assemblies on the bumper. The inner 2 sensor bezels assemblies will be discarded. 2 new bezel assemblies are provided in the hardware kit. To remove the bezels from the bumper, you will pull the previously pried apart tabs towards each other and remove the outer bezel from the bumper. (Fig. J & K)

Fig. J



Fig. K



11. Next, you will remove the factory license plate lights from the center of the bumper. Use a flat head screwdriver and a pry bar to remove them. (Fig L) First remove the wire harness clip from light. Use the screwdriver to lightly pry in the release tab. At the same time use a pry bar to apply pressure to the backside of the light, use the bumpers frame as leverage. With some wiggling it will pop out the front into 3 pieces. (Fig. M) You will only keep the actual light itself; the rest of the bezels will be discarded.

Fig L



Fig. M



12. Lastly, remove the 7-pin trailer plug. You will squeeze the 2 side metal prongs and remove it out the front of the bumper.

## INSTALL

13. First, install the factory license plate lights (Fig. N) and the 7-Pin trailer plug (Fig. O) into your new JT bumper. Simply snap them into place.

Fig. N



Fig. O



14. Layout your wire harness on the backside of the bumper in the same orientation as it was removed. If your Jeep does not have proximity sensors, you can install the supplied plastic caps in place of the sensors and **skip to step 15**. You will now use the 2 previously removed outer bezel assemblies out of the old bumper and the new supplied sensor bezels in the hardware kit. (Table P) Install the old sensors brackets first into the bumper. The new sensor brackets are identical to the old brackets you just installed, match them up and install them as well.

Table P	
Part # 68341893AA – Driverside inner base	Part # 68341892AA – Passenger inner base
Part # 6UD43RXFAA – Driverside outer bezel	Part # 6UD42RXFAA - Passenger outer bezel

15. Finalize up your wiring on the inside of the bumper by installing all 4 of the sensors, plugging in the license plate lights, and using the 5 zip tie mounts welded to the top side of the bumper to secure the harness. (Fig. Q & R) Now is also a good time to install reverse/bumper lights. WFO recommends Rigid SR-M Series LED Back Up Light (#980013) or Baja Design S2 Pro Work/Scene Lights (#487808). You can either run these to a separate switch near your dash or your factory taillight reverse lights. If wiring them to your factory taillights, you must run each bumper light to a separate taillight. If hooked together and ran to one taillight or trailer plug wiring, your jeep will throw engine codes and your lighting system will have errors.

Fig. Q



Fig. R

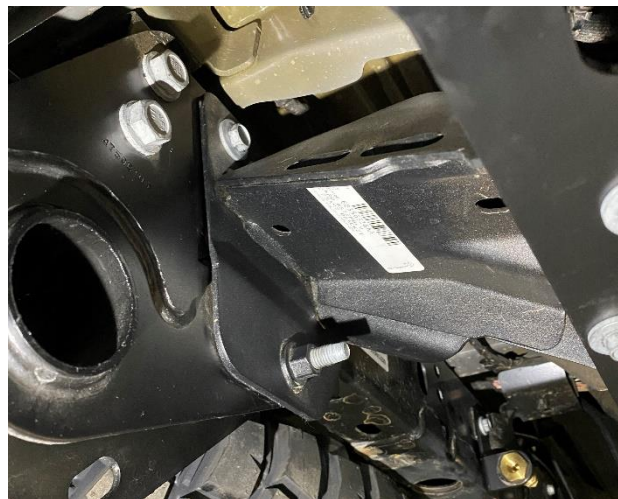


16. As noted before, if you own a non-Rubicon model JT you will need to purchase the factory frame mounts from the dealership. This bumper utilizes the Rubicon equipped rocker guards. You can always install these later if not purchased yet. You will need to loosen the 3 bolts on each frame side bracket for final adjustments when mounting the bumper. (Fig. S & T) You don't have to remove the tire but it helps to get tools in to loosen up the bolts.

Fig. S



Fig. T



17. In your hardware kit you will use the bumper to frame gussets. (Fig. U) There will be a Driver and Passengerside bracket. Use per side, qty. 2 – ½”-13 x 1 ½” G8 bolts, qty. 4 – ½” G8 washers, and qty. 1 – ½”-13 G8 Nylock Nuts. Mount hardware like shown in picture, do not fully tighten these bolts yet. (Fig. V)

Fig. U



Fig. V



18. Next, you will need help holding the bumper up to the jeep in order to bolt it on. In the hardware kit you will need:

Qty. 2 – Welded nut plates	Qty. 4 – ½” G8 Lock Washers
Qty. 4 – ½”-13x1.5” G8 Bolts	Qty. 4 – ½” G8 Washers

Line the bumper up to the factory frame mounts, slip the nut plate up inside the WFO bumper frame pocket, take the ½” - 13x1.5” G8 bolt with lock washer and regular washer and slip it through the bumper gusset bracket, factory frame, bumper pocket, and thread it into the nut plate. (Fig. W) Repeat on both sides. Loosely start all bolts but do not tighten yet.

Fig. W



19. Grab the 6 factory rock guard bolts previously removed and thread them from the bottom into the factory rock guard frame brackets. (Fig. X) Also install the 2 factory bolts previously removed from behind the license plate. Keeping all bolts loose for final fitment.

Fig. X



20. Make sure all wiring is tucked up and zip tied, not to be pinched by bumper brackets. Plug the bumper harness into each of the frame rail harnesses as well as the trailer plug harness.
21. Align bumper left/right and final tighten all bolts. Use the qty. 4 supplied stainless-steel button head alan bolts and washers to attach your license plate. (Fig. Y)

Fig Y



22. Test all lights and sensors for proper installation. Verify all fasteners are properly torqued before driving vehicle.





10076 Streater Road Suite #7, Auburn, CA 95602  
Phone: 530.268.9494 [www.wfoconcepts.com](http://www.wfoconcepts.com)

**Follow us on all Social Media platforms!**

