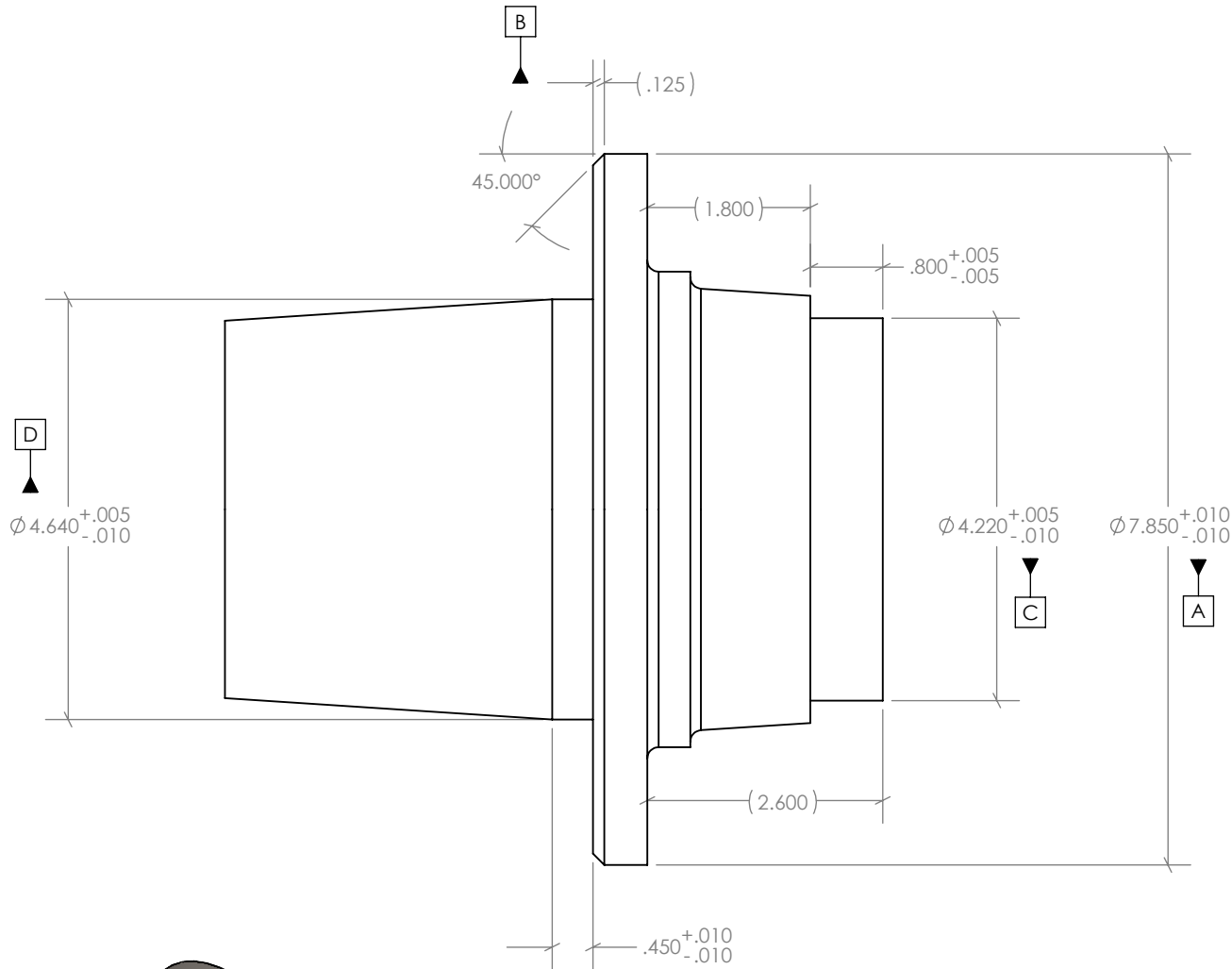
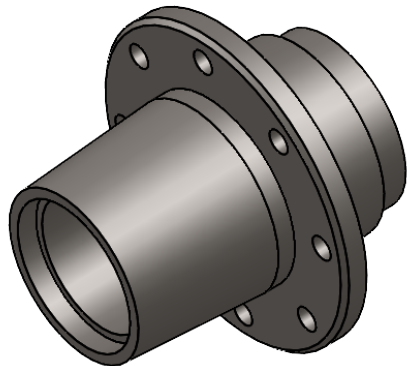



REVISIONS			
REV.	DESCRIPTION	DATE	APPROVED
A	Part Released	8/12/2016	Keven K



Machining Info:

- Go in order of lettering
- (A) Outer hat turned down to 7.850"
- (B) A 45° chamfer on outer rotor side, .125" in to clear interference on new rotors.
- (C) Turned down to 4.220" with a depth of .800".
- (D) Turned down to 4.640" to center rotor on hub.



DRAWN BY: KEVEN K	DATE: 8/12/16	MATERIAL:	 10076 Streeer Rd. - Suite 7 Auburn, CA 95602 Phone: 530.268.9494 WWW.WFOCONCEPTS.COM
DRAWING UPDATED: 5/12/22		FINISH:	
THE INFORMATION CONTAINED IN THIS DRAWING IS THE SOLE PROPERTY OF WFO CONCEPTS. ANY REPRODUCTION IN PART OR AS A WHOLE WITHOUT THE WRITTEN PERMISSION OF WFO IS PROHIBITED.		TOLERANCES / DIMENSIONS ARE IN INCHES EXCEPT AS NOTED: ANGULAR ±0.1° BEND ±0.5° DEC: 2PL ±0.01 3PL ±0.005	
DO NOT SCALE DRAWING	SHEET 1 OF 1	PART #	TITLE: 1978 - 1991 Ford Dana 60 Machined Hub Tolerances REV A